

TUFLOC

INSTALLATION AND OPERATING INSTRUCTIONS

50-2 QRF High-Security Freezer Lock



The Tufloc 52-2 QRF is a member of the Tufloc family of high-security devices. It is carefully engineered and manufactured to provide maximum security and long, trouble-free service. To ensure the lock's optimum performance, it is important that everyone involved with its installation and operation be familiar with its features and these instructions.

This lock serves a dual purpose: To protect the freezer contents from theft and to protect the safety of the people locked inside, for whatever reason, by providing a means of escape.

Although the Tufloc High-Security Lock provides high security, the installation is rather simple and can be performed by persons familiar with basic tools. However, if there is any doubt, its installation should be performed by a professional locksmith.

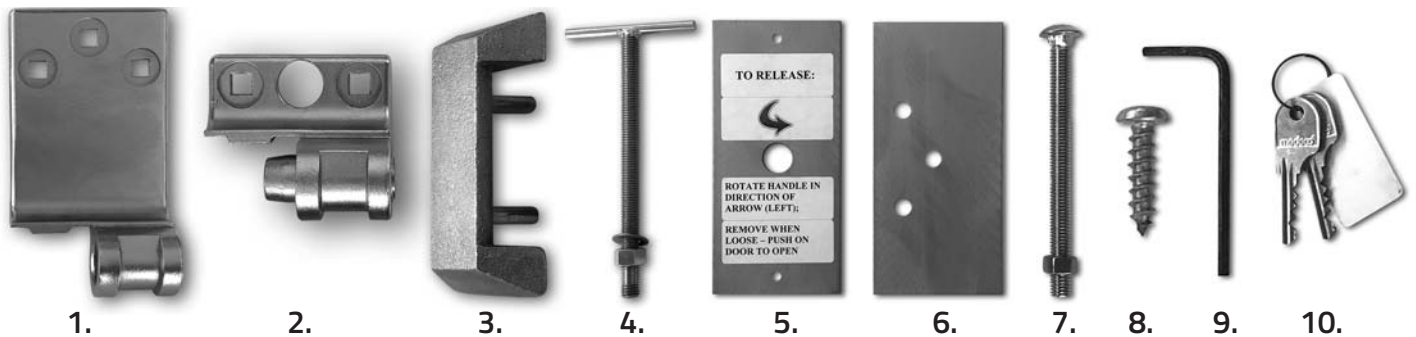
Materials Required

The tools required for installation include:

5/32" drill	Flat bladed screwdriver
7/16" drill	9/16" wrench
25/64" or 13/32" drill	Ruler

Please ensure that the following items are included with your Tufloc Lock:

1. 50-2 Long Wing.....(1)
2. 50-2 Short Wing with Keyed Cylinder.....(1)
3. Shroud.....(1)
4. Quick-Release Clamp Bolt (threaded handle, hex nut, washer).....(1)
5. Quick-Release Back Plate (with printed instructions).....(1)
6. Back Plate (with 3-hole offset pattern).....(1)
7. 3/8"- 16 Hex 4-3/4" Grade 5 Carriage Bolts with Nuts.....(3)
8. #10 x 3/4" Stainless Steel Self-Tapping Screws.....(2)
9. 3/32" Hex Wrench.....(1)
10. Keys.....(2)



Installation

Locate the short wing on the frame of the structure conveniently near mid-height of the door without interfering with other latches. Ensure that there is ample room to slide the key into the cylinder without interfering with any other devices that may be attached to the unit.

Position the short wing so that the center line of the holes is 2-1/2" from the door jamb edge. This positioning is important so that the door will swing open without hitting the short wing.

Mark the center of the middle hole and drill a 3/4" thru-clearance hole for the quick-release clamp.

Mark the center of the top and bottom holes and drill two 7/16" holes approximately 1-1/2" deep to accept the shroud guide pins. The depth is not critical other than assuring that the shroud pins do not bottom-out in the holes before the entire unit is tight against the surface of the freezer.

Place shroud over the short wing so that the guide pins project through the short wing holes and locate on the surface of the freezer by aligning the guide pins into the 7/16" drilled holes.

Fasten the short wing to the wall by: (1) threading the nut on the clamp bolt to near the handle; (2) placing the washer and then back plate (with the printed instructions) on the threaded clamp; (3) inserting the clamp through the 3/4" drilled hole from the inside; (4) engaging the shroud and threading the clamp in a clockwise direction completely into the shroud; (5) backing the clamp off (counter-clockwise) approximately one turn, run the washer and nut snugly up to the back plate and freezer wall and turning the clamp clockwise to snugly tighten the short wing and shroud to the wall.

Ensure that the back plate is parallel to the door jamb and legible before permanent installation using two #10 x 3/4" self-tapping screws installed in two 5/32" drilled holes.

At this point, the short wing should be firmly attached to the freezer unit without interference to the operation of the door.

Installation of the Long Wing

Interlock the long wing with the mounted short wing so that the central bolt travels and functions smoothly in the unlocking and locking position. With the central bolt in the up (locked) position, mark the center of each of the three mounting holes in the wing and drill thru-holes using a 25/64" or slightly larger drill.

Insert three 3/8"-16 carriage bolts through long wing holes, freezer door and back plate. Loosely tighten the nuts on the inside.

Before final tightening of all part, be sure that: (1) the door swings open freely; (2) the central bolt travels smoothly upward and downward; (3) locking/unlocking functions are accomplished smoothly.

Tighten the long wing mounting bolts and adjust the quick-release clamp as necessary to ensure a secure lock assembly. A 15/16" wrench may be helpful to tighten the nut on the clamp bolt. It is not necessary or desirable to over-tighten this nut!

Test Operations

Your Tufloc High-Security Lock should now function properly. Run through the following procedures several times to be sure of proper alignment with all parts securely mounted and QUICK-RELEASE parts tightened. YOU SHOULD DO THIS WITH EACH PERSON IN YOUR FACILITY TO ASSURE COMPLETE FAMILIARITY.

1. LOCK DOOR
 - Close door
 - Push CENTRAL BOLT upward into SHORT WING
 - Turn key clockwise and remove key
2. UNLOCK DOOR
 - Turn key counter-clockwise and drop down CENTRAL BOLT
3. Open door
 - Turn key clockwise to locked-open position and remove key
4. RELEASE FROM INSIDE (ACTIVATE QUICK-RELEASE DEVICE)
 - Turn QUICK-RELEASE CLAMP counter-clockwise until loose
 - Remove QUICK-RELEASE CLAMP entirely
 - Push on door to open
5. RE-ATTACH SHORT WING, QUICK-RELEASE CLAMP AND CLAMPING NUT
 - Follow procedures described above in the installation of the short wing.

NOTE: STORE MANAGER OR AUTHORIZED SUPERVISOR SHOULD PERFORM RE-ATTACHMENT

Cylinder Removal

The central bolt and cylinder may have to be removed from the Tufloc Lock for maintenance or key rotation. Removal is easily accomplished by loosening the set screw in the barrel of the short wing with the hex wrench provided, pulling the *unlocked* central bolt *up* through the barrel.

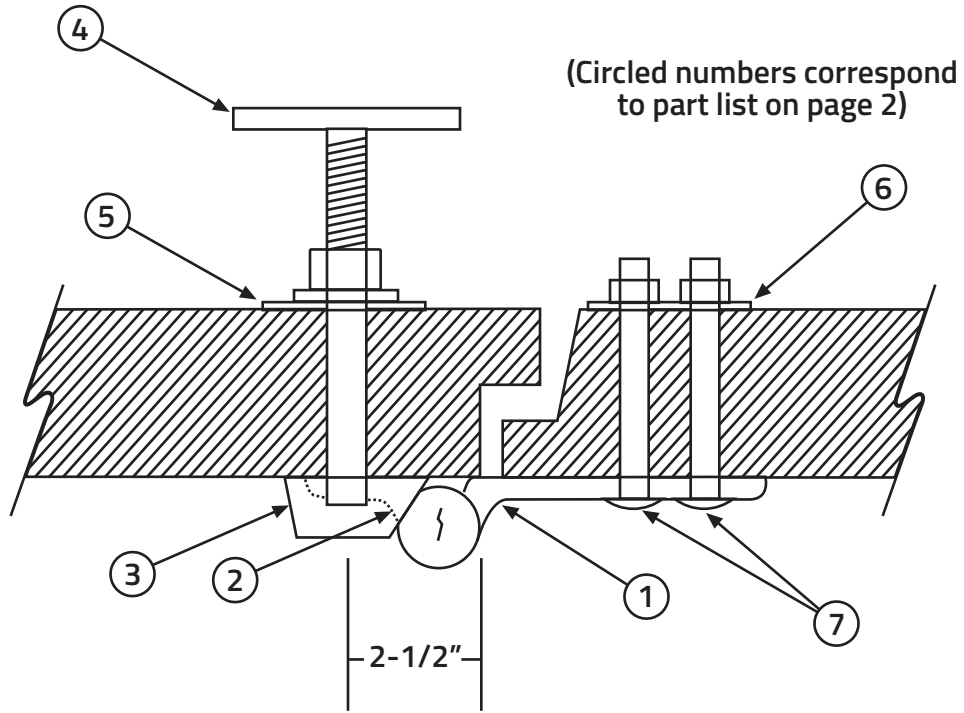
Maintenance

The Tufloc Lock is manufactured in non-corrosive stainless steel with brass components and should not need any periodic maintenance. Any problems with the keyed cylinder should be directed to the factory.

For assistance, please call our Customer Service Department at 1-800-321-0870 or 330-452-9132.

Top Cross Section

Door Closed



NOTE: 2-1/2" is distance required between extreme edge of door jamb and drill hole centers.

Door Open

